

# User Manual tempmate.®-P1



Version: TMP1 – EN-00

- 1 -

## I. Introduction

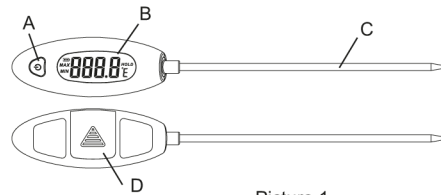
With its built-in stainless steel probe, the tempmate-P1 is the perfect tool for fast measuring temperatures inside your product.

Used in business fields like food Production and food manufacturing, canteen kitchens and quality control, this absolute reliable probe thermometer displays the current and accurate temperature at the push of one button.

## II. Technical Characteristics

- ▶ slim and handy design
- ▶ LCD display
- ▶ holding and locking current temperature (HOLD function)
- ▶ MAX / MIN temperature measuring
- ▶ conversion from °C to °F
- ▶ low power usage
- ▶ automatic shut-off

## III. Name of each part (Picture 1)

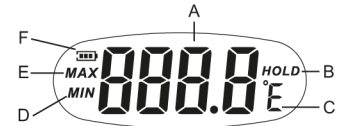


- Picture 1 -

- 2 -

- A) Start / Function / Shut-Off Key
- B) LCD Display
- C) Stainless Steel Measuring Probe
- D) Battery Compartment

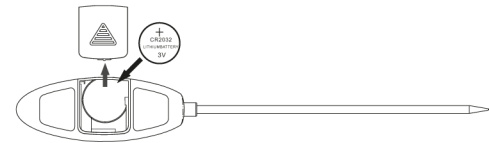
## IV. LCD Display (Picture 2)



- Picture 2 -

- A) Current temperature
- B) HOLD function
- C) Temperature unit
- D) MIN Temperature
- E) MAX Temperature
- F) Battery Life

## V. Replacing the battery (Picture 3)



- Picture 3 -

1. Open the battery compartment and replace the CR2032 button battery (as shown in picture 3)

- 3 -

2. Close the battery compartment
3. If the remaining battery power is insufficient, the "⎓" symbol may appear on the LCD display and the battery has to be replaced

## VI. Using this device

1. This device can be controlled with only one button, click the button to enter measuring status
2. After starting to measure the temperature, it can be locked (HOLD function) with the button by pressing it one short time; pressing it again turns off the HOLD function
3. To enter the MAX mode, simply push the button two times in a row, to change to MIN mode just click it one more time.  
To re-enter the NORMAL mode, press the button one more time.  
Please note that during the MIN and MAX mode, the device will not shut-off automatically.
4. To change between measuring units °C and °F, the button has to be pushed three times in a row in NORMAL mode
5. The device will automatically shut-off if it is not used for 12 minutes, it can be shut-off manually by holding the button for two seconds

## VII. Safety instructions

### Usage notes:

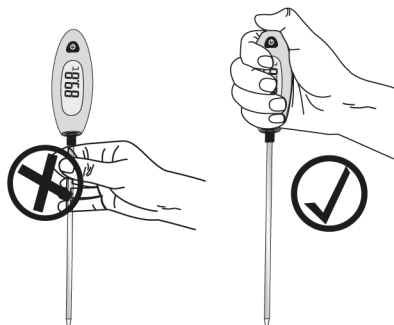
1. Do not use any solvents to clean the casing of the device, but rather clean water

- 4 -

2. Do not use this device in poisonous or hazardous environment
3. It is recommended to take out the battery if the device is not used for a long time to ensure a longer battery life
4. Do not insert the casing of the device into water or other liquids

### Safety notes:

1. The probe of this thermometer is sharp, to prevent injuries do point the sharp end in the direction of any other person
2. Do not place this device where children have access to it
3. The device has to be used as shown in picture 4; to avoid deviations and errors do not touch the steel probe during measurements



- Picture 4 -

- 5 -

## VIII. Technical Parameters:

Temperature Range	-50°C to +300°C (-58°F to +572°F)
Temperature Accuracy	+/- 1.0°C (from -10°C to +100°C) +/- 1.5°C (from +100°C to +200°C) +/- 2.0°C (above +200°C)
Temperature Resolution	0.1°C
Battery	CR2032 Button battery (replaceable)
Environment Temperature	0°C to +40°C (+32°F to +104°F)
Environment Humidity	10% to 90% RH
Dimensions	Probe: 149.5mm x 6.0mm
	Display: 44.0mm x 18.0mm
	Total: 242.6mm x 33.0mm

Special notes: technical changes reserved



- 6 -